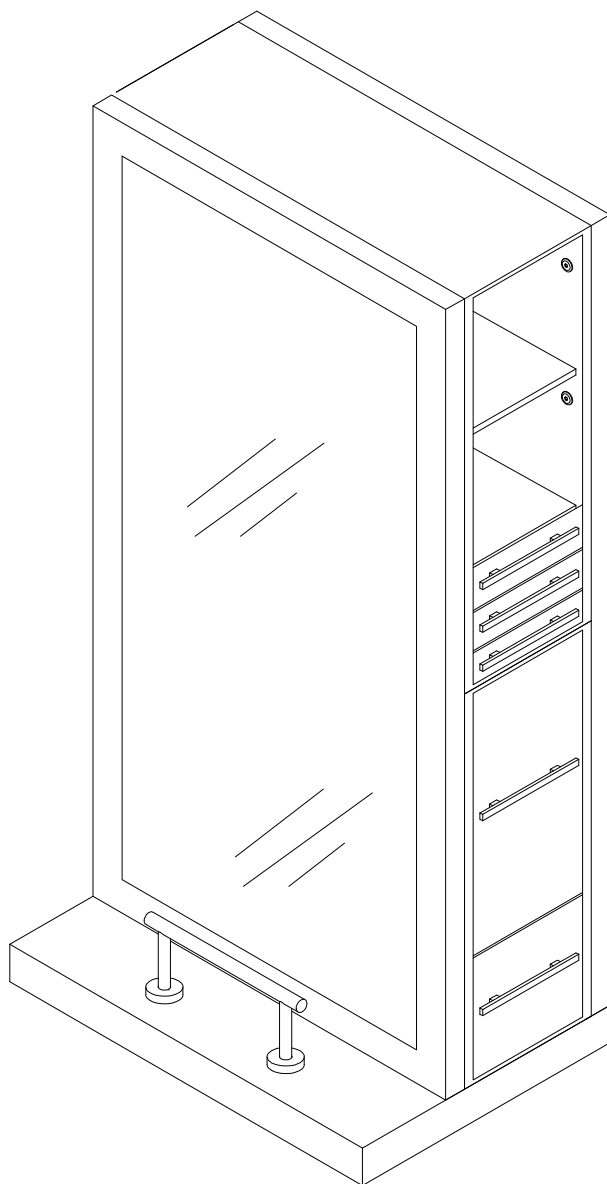




# Assembly Instructions



Single-sided Genesis Styling Station

Model #3391

## PARTS LIST\*\*

Part	Qty.	Description	Sketch
A	1	Footrests	
B	2	Footrest covers	
C	2	Footrest bolts	
D	4	Short Allen bolts	
E	4	Medium Allen bolts	
F	16	Long Allen bolts	
G	8	Flat-top Allen bolts	
H	24	Washers	
I	4	Short bolt anchors	
J	10	Handles	
K	20	Handle screws	
L	5	Appliance rings	

\*\*Open all drawers and boxes to check for parts before beginning assembly.

### Tools required:

Large Allen wrench (included)

Small Allen wrench (Included)

Phillips-head screwdriver (Not included)

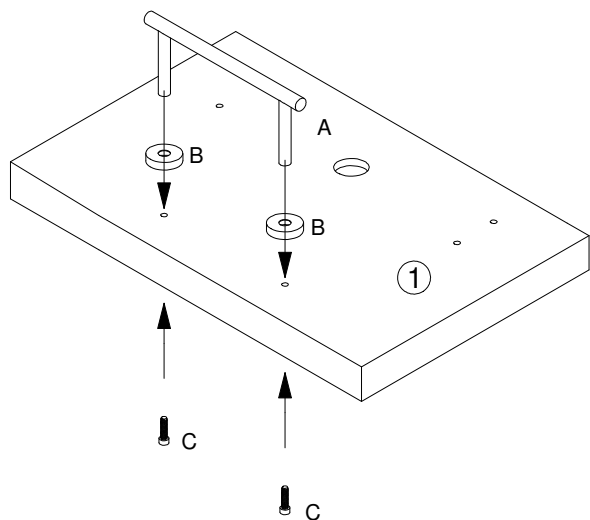
## Components (Label - Description)

1 - Base  
2 - Bottom cabinet section  
3 - Top cabinet section

4 - Mirror panel  
5 - Rear panel

## 1 - Mounting the footrest

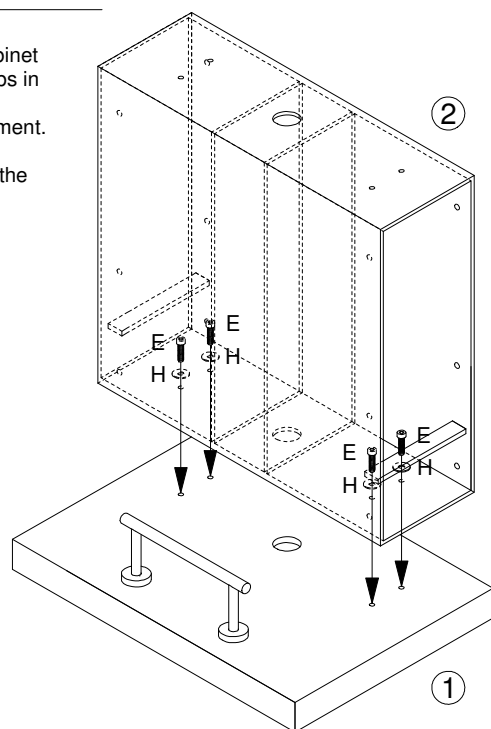
- 1) Locate the footrest (A), the footrest covers (B), and the footrest bolts (C). The bolts may be screwed into the bottom of the footrest. If so, remove them from the footrest.
- 2) Slide the legs of the footrest (A) through the footrest covers (B) and anchor from underneath the base (1) with the footrest bolts (C).



- A x1
- B x2
- C x2

## 2 - Mounting bottom cabinet section

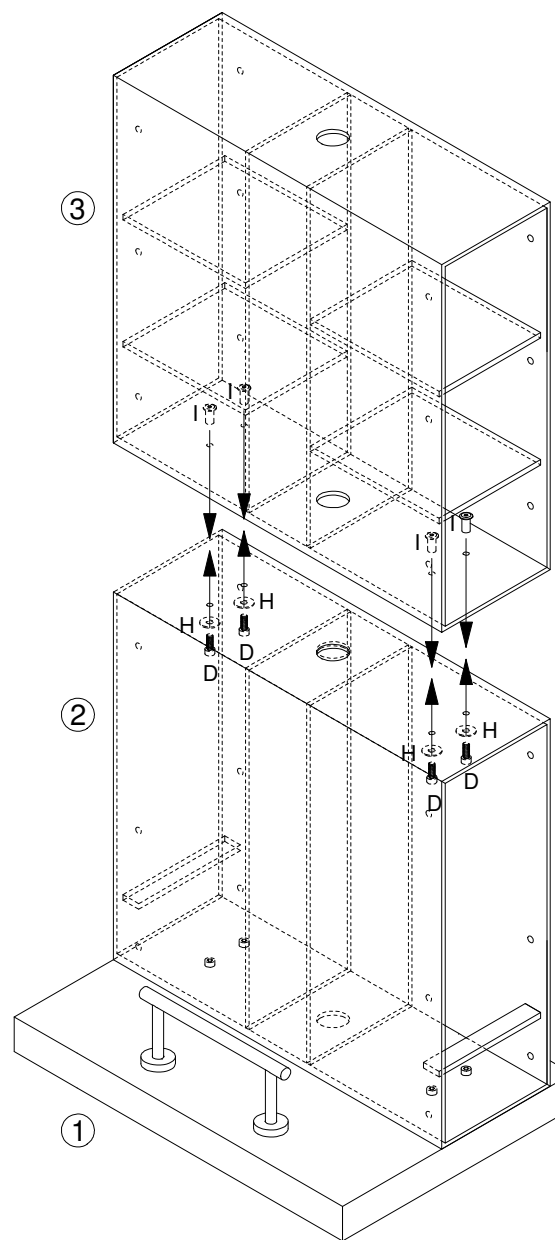
- 1) Remove all the drawers from the bottom cabinet section (2) by pressing the black release tabs in the glides (one up, one down) and pulling. Lay drawers out in proper order for replacement.
- 2) Set the bottom cabinet section (2) on top of the base (1), aligning the 4 small holes in each.
- 3) Secure the bottom cabinet section (2) to the base (1) using the 4 medium Allen bolts (E) and 4 washers (H) as shown.



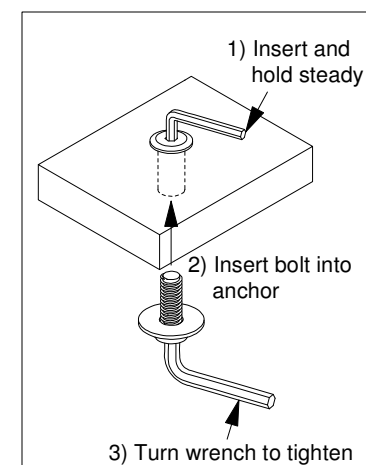
- E x4
- H x4

## 3 - Mounting the top cabinet section

- 1) Remove all the drawers from the top cabinet section (3) by pressing the black release tabs in the glides (one up, one down) and pulling. Lay drawers out in proper order for replacement.
- 2) Set the top cabinet section (3) on top of the bottom cabinet section (2), aligning the 4 small holes in each.
- 3) Drop the 4 short bolt anchors (I) into the holes in the bottom of the top cabinet section (3) and secure by screwing in the 4 short Allen bolts (D) with washers (H) upward through both cabinet sections into the anchors. Use the small Allen wrench to hold the anchors in place while tightening the bolts (see magnification).

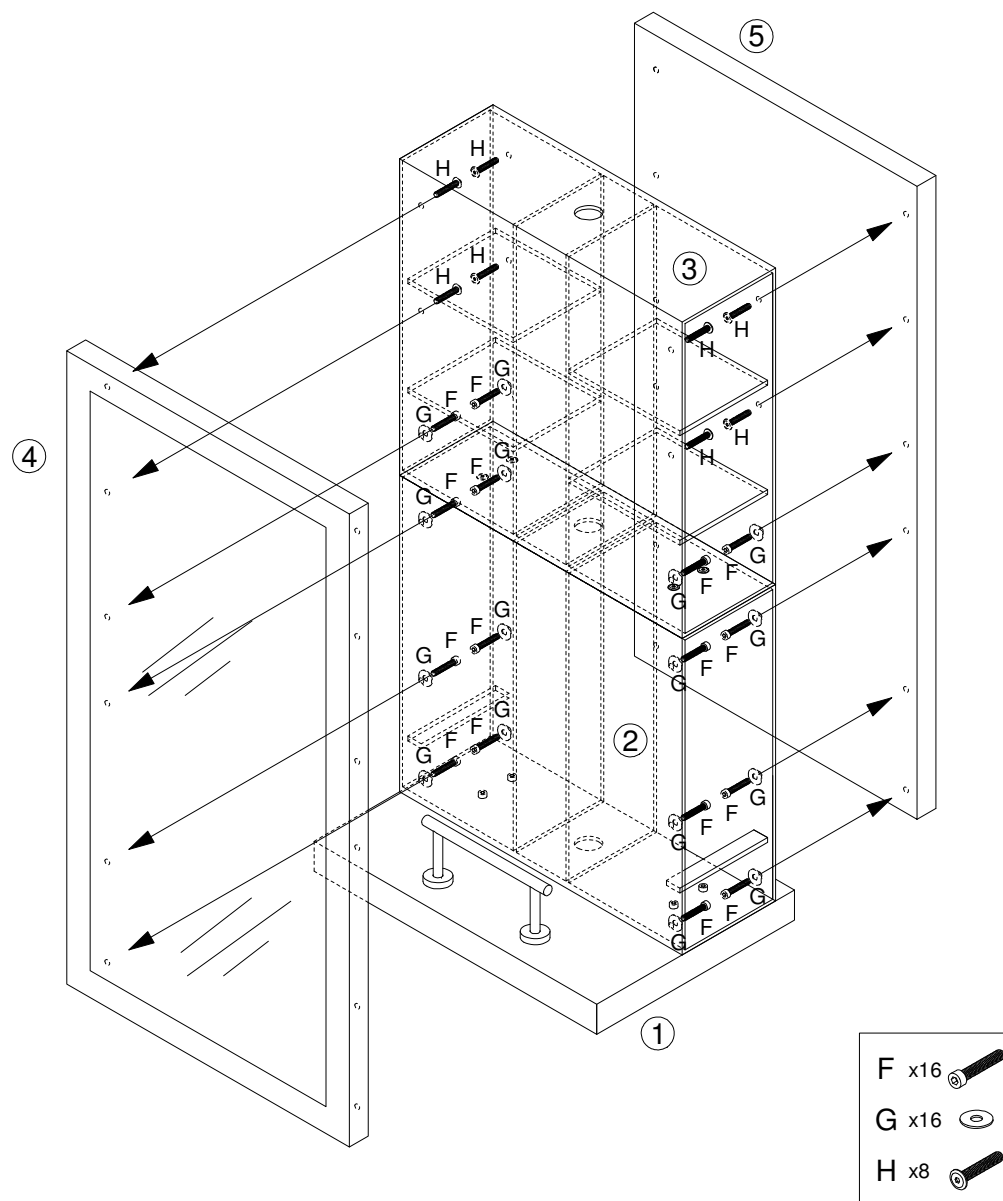


- D x4
- H x4
- I x4



## 4 - Mounting the mirror and back panels

- 1) Rotate the mirror panel (4) such that the holes in the back of the panel are aligned with the holes in the front faces of the bottom and top cabinet sections (2, 3).
- 2) Anchor the mirror panel to the cabinets by using the long Allen bolts (F) and washers (H) in the bottom 4 sets of holes and the flat-top Allen bolts (G) without washers in the top 2 sets of holes.
- 3) Repeat steps 1 and 2 for the back panel (5), using the same configuration of bolts and washers.



## 5 - Replacing the drawers

- 1) For shipping, the drawer handles (J) are attached to the insides of the drawer faces. Using a Phillips-head screwdriver, remove the 2 screws (K) in each and reattach the handles on the front of the drawers.
- 2) Drop the metal appliance rings (L) into the holes in the appliance drawer.
- 3) Slide the drawers back into their respective glides.

